

# GALLERY<sup>®</sup> STEEL

garage doors

3-LAYER CONSTRUCTION



America's Favorite Garage Doors<sup>®</sup>



Model GD2SU; Shown in Black with SQ22 Windows

# GALLERY® STEEL

The Gallery® Steel three-layer construction provides exceptional strength, energy efficiency and dent resistance as well as a beautiful carriage house appearance. The 2" or 1-3/8" thickness of Intellicore® polyurethane or bonded polystyrene insulation and thermal break makes these doors heat and cold resistant while the tongue-and-groove joint helps seal out wind, rain and snow. Available in short and long panels with multiple window options, the three-layer Gallery® Steel is virtually maintenance-free, so the first fabulous impression becomes a lasting impression.



**intellicore®**  
insulation technology

## Warmer. Quieter. Stronger.

Gallery® Steel garage doors featuring Intellicore® insulation technology represent the ultimate smart choice for homeowners. Clopay's Intellicore® insulation is a proprietary polyurethane foam that is injected into a garage door, expanding to fill the entire structure. The result is a door with incredible strength and durability. Its dense insulation also produces a quieter door, and with one of the industry's leading R-values of 18.4, it provides year-round comfort and improved energy efficiency. Smart, indeed.



## 3-Layer Construction

| GD2SU & GD2LU MODELS   | GD1SU & GD1LU MODELS   | GD2SP & GD2LP MODELS                       | GD1SP & GD1LP MODELS                       |
|--|--|--|--|
|  <b>2"</b><br>POLYURETHANE INSULATION |  <b>1 3/8"</b><br>POLYURETHANE INSULATION | <b>2"</b><br>POLYSTYRENE INSULATION        | <b>1 3/8"</b><br>POLYSTYRENE INSULATION    |
| <b>EFFICIENCY</b><br><b>18.4</b><br>R-VALUE  | <b>EFFICIENCY</b><br><b>12.9</b><br>R-VALUE  | <b>EFFICIENCY</b><br><b>9.0</b><br>R-VALUE | <b>EFFICIENCY</b><br><b>6.5</b><br>R-VALUE |

Calculated door section R-value is in accordance with DASMA TDS-163. Models with Ultra-Grain® finish and Black paint options are 25 gauge steel.





Model GD1LU; Shown in Ultra-Grain® Oak Slate Finish with Grille on ARCH1 Windows

# VINTAGE style with updated APPEAL

## COLORS



- Exterior steel on standard color doors has a natural woodgrain texture.
- Doors can be painted to match the home's exterior using a high-quality latex exterior paint. Do not use oil-based paint.

*\*Popular in select markets, Glacier White is a brighter white.  
 † Additional charges apply.  
 Due to the printing process, colors may vary.*

## CUSTOM PAINT OPTION



Color Blast® finish offers more than 1,500 Sherwin-Williams® color options to complement your home. Clopay's durable two-part paint system has been thoroughly tested and is backed by a five-year warranty.

## ULTRA-GRAIN® FINISH OPTION



Ultra-Grain® Oak Medium Finish



Ultra-Grain® Oak Dark Finish



Ultra-Grain® Oak Walnut Finish



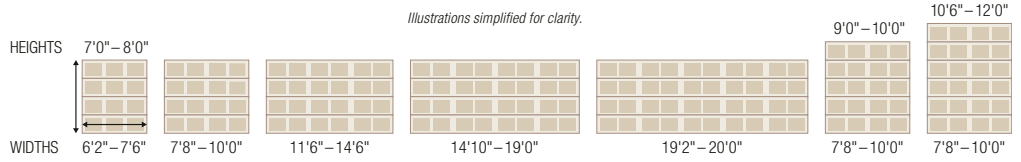
Ultra-Grain® Oak Slate Finish

- Painted steel surface simulates a real stained door without the need of staining and the ongoing maintenance of wood.
- Oak woodgrain runs horizontal on stiles and vertical on panels for an authentic, natural look.
- Available in Medium, Dark, Walnut or Slate finishes that complement Clopay Entry Doors, shutters and other exterior stained wood products.
- Exterior steel surface on an Ultra-Grain® finish door has a stucco texture to create a more natural woodgrain appearance.
- Window frames, grilles and inserts are color matched to coordinate with the Ultra-Grain® finish patterns. All window options are available.  
*Additional charges apply.*



# SHORT PANEL WINDOW DESIGNS AND TOP SECTION OPTIONS

MODELS  
GD1SP, GD1SU,  
GD2SP AND GD2SU



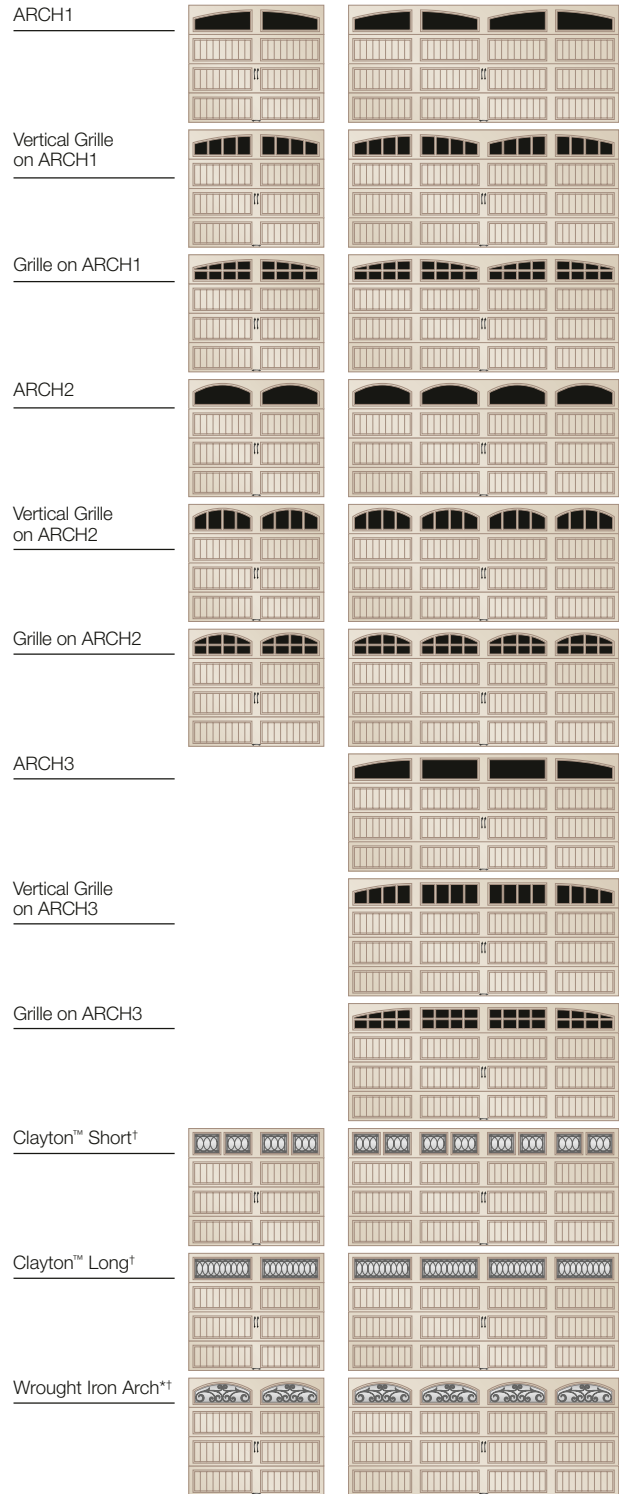
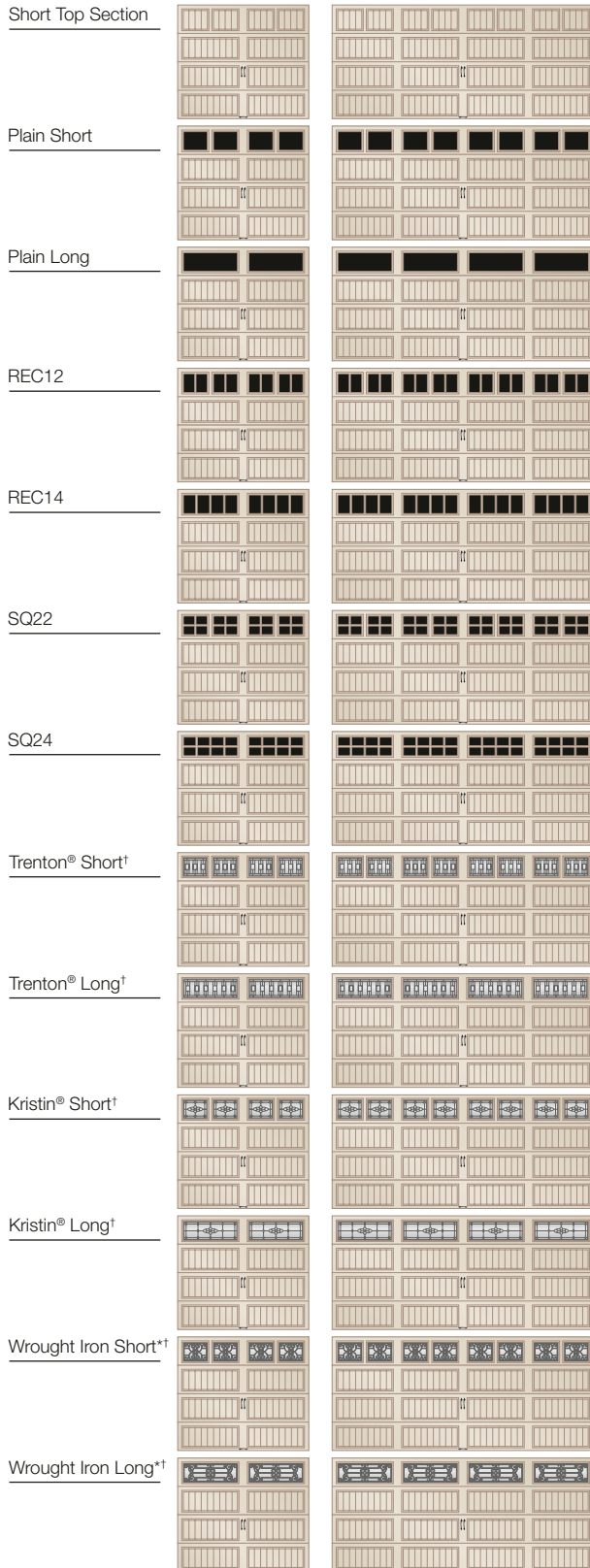
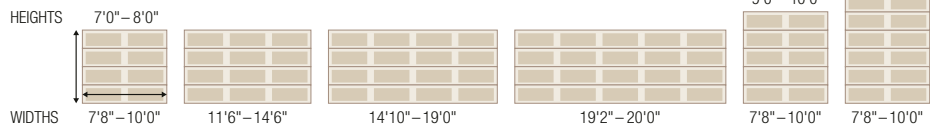
|                      |  |  |                          |  |  |
|----------------------|--|--|--------------------------|--|--|
| Long Top Section     |  |  | ARCH1                    |  |  |
| Plain Short          |  |  | Vertical Grille on ARCH1 |  |  |
| Plain Long           |  |  | Grille on ARCH1          |  |  |
| REC12                |  |  | ARCH2                    |  |  |
| REC14                |  |  | Vertical Grille on ARCH2 |  |  |
| SQ22                 |  |  | Grille on ARCH2          |  |  |
| SQ24                 |  |  | ARCH3                    |  |  |
| Trenton® Short†      |  |  | Vertical Grille on ARCH3 |  |  |
| Trenton® Long†       |  |  | Grille on ARCH3          |  |  |
| Kristin® Short†      |  |  | Clayton™ Short†          |  |  |
| Kristin® Long†       |  |  | Clayton™ Long†           |  |  |
| Wrought Iron Short*† |  |  | Wrought Iron Arch**†     |  |  |
| Wrought Iron Long*†  |  |  |                          |  |  |

\*Acrylic  
†Complements Clopay Entry Door glass.  
Note: Due to stile width restrictions, some odd size door widths may allow only for the installation of a single handle. See your Clopay Dealer for details.



# LONG PANEL WINDOW DESIGNS AND TOP SECTION OPTIONS

MODELS  
GD1LP, GD1LU,  
GD2LP AND GD2LU



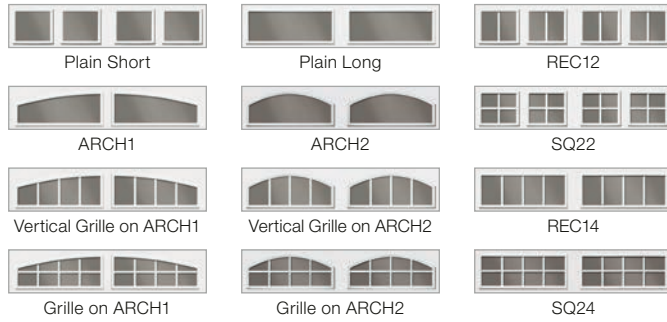
\*Acrylic

†Complements Clopay Entry Door glass.

Note: Due to stile width restrictions, some odd size door widths may allow only for the installation of a single handle. See your Clopay Dealer for details.

# Windows

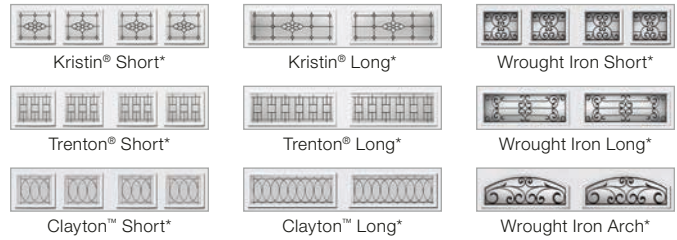
## GLASS



\*Complements Clopay Entry Door glass.

Long and short windows may be used in any Gallery® Steel 3-layer model. Double-strength glass is standard. Optional obscure, 3/4" insulated and 3/4" insulated obscure glass is available on all Gallery® Steel 3-layer models. Additional charges for optional glass apply.

## ACRYLIC



Acrylic windows require special cleaning. Never use products that contain ammonia or petroleum products to clean acrylic. Please visit [www.clopaydoor.com/acrylic](http://www.clopaydoor.com/acrylic) for complete details.

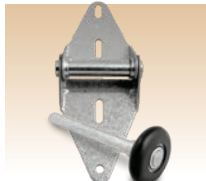
Windows are available single pane or insulated in clear, frosted, seeded, obscure and rain designs. Clear acrylic also available.



## Additional Features



Large authentic arch window designs. Ultra-Grain® finish window frames, grilles and inserts are color coordinated to Medium, Dark, Walnut and Slate finishes.



2" thick polystyrene doors and all Intellicore® insulation doors come standard with 10-ball nylon rollers and heavy-duty 14 gauge steel hinges.



Energy-efficient thermal break. Polyurethane model shown.

- Hot-dipped galvanized steel interior and exterior skins with a baked-on primer and top coat help ensure a virtually maintenance-free door with long-lasting beauty.
- Replaceable vinyl bottom weatherseal in a rust-resistant aluminum retainer helps seal out the elements.
- 2" thick polystyrene doors and all Intellicore® insulation doors comply with 2015 IECC air infiltration requirement of 0.40 cfm/ft<sup>2</sup> or less (IECC, Section C402.5.2).
- See your Clopay Dealer for WINDCODE® door availability.

## Warranties



Visit [clopaydoor.com](http://clopaydoor.com) or call 1-800-2CLOPAY (225-6729) for more information on Clopay, America's Favorite Garage Doors.

Follow us on



© 2020 Clopay Corporation. All rights reserved.

RSDR-GALLERY3LAYERSS-10\_REV1120

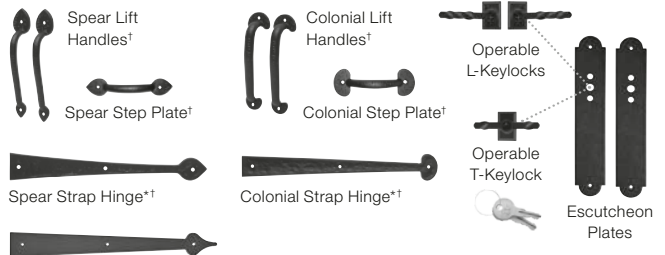
## Decorative Hardware

### STANDARD



Note: Decorative hardware options vary based on door widths. Standard hardware is not provided if a lock is chosen. See your Clopay Dealer for details.

### OPTIONAL



Spade Strap Hinge\* (Complements Spade Lift Handles and Spade Step Plate)

\* Aluminum construction. \*Door may not open properly if installed near the top depending on opening dimensions and lift type. See your Clopay Dealer for more details.

## Environmental Assurance

Clopay doors are compliant with environmental laws and regulations. Clopay doors do not contain HFCs. All Clopay doors are compliant with:

- California SB 1013
- New Jersey A-5583/S-3919 – Greenhouse Gas Bill
- Washington HB 1112 – Hydrofluorocarbon Greenhouse Gas Emissions
- Canadian regulations amending the ozone-depleting substances and halocarbon alternatives regulations

imagine



DESIGN YOUR DOOR  
OPEN CAMERA  
AND POINT!